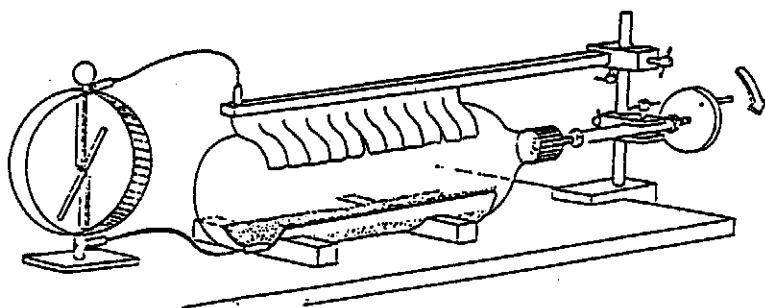
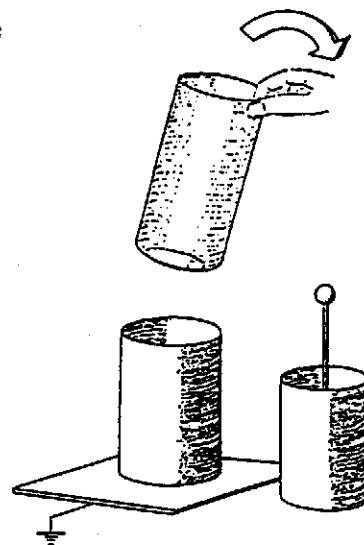


Elektrostatik

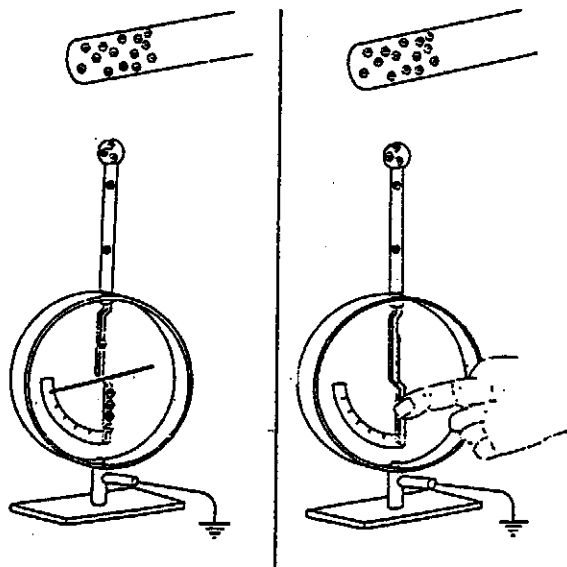
Reibungselektriermaschine



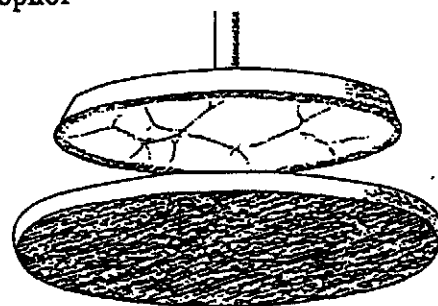
zerlegbare
Leidener
Flasche



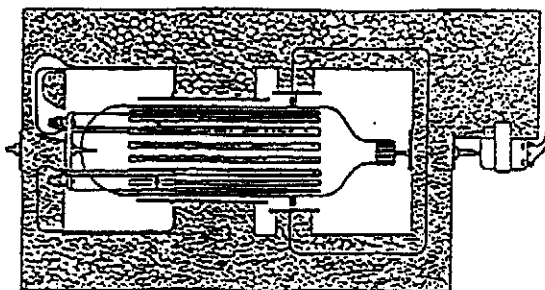
Influenz



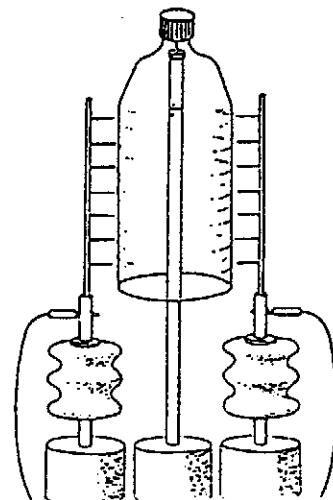
Elektrophor



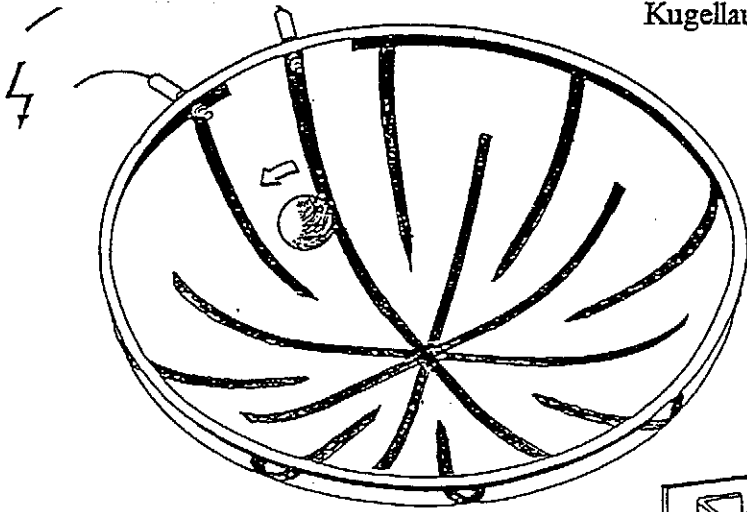
Influenzmaschine



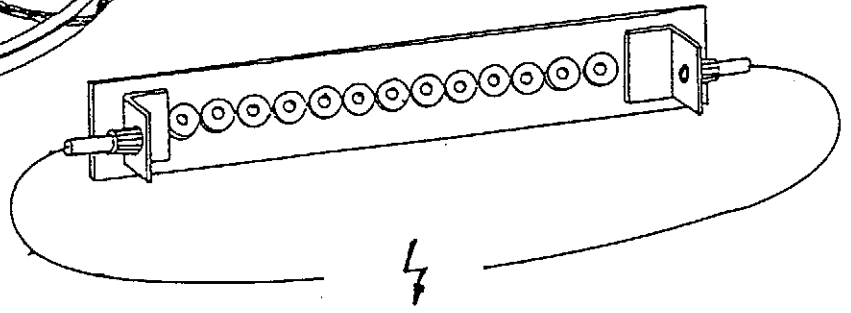
elektro-
statischer
Motor



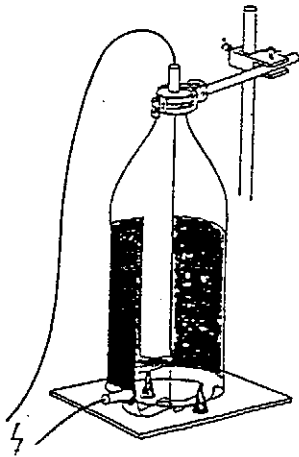
Kugellauf



Funkentafel



elektrische Gasreinigung

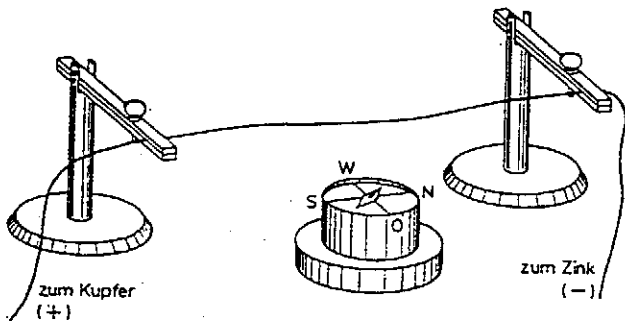


Stahlfunkenkette

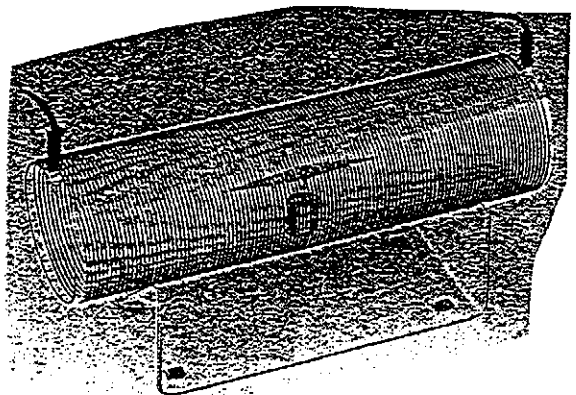


Elektrodynamik

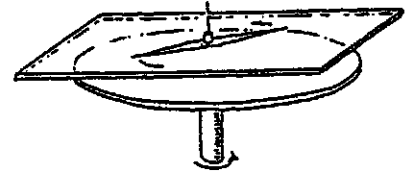
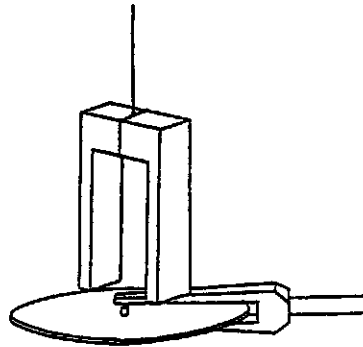
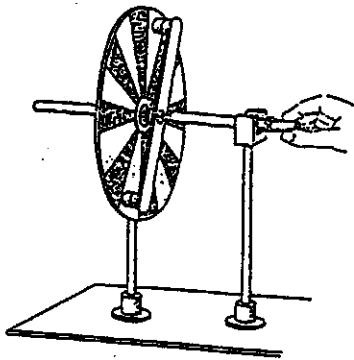
Oersted-Experiment



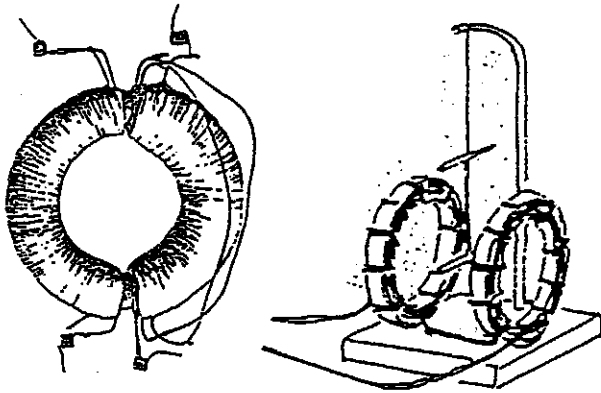
Schweiggerscher Multiplikator



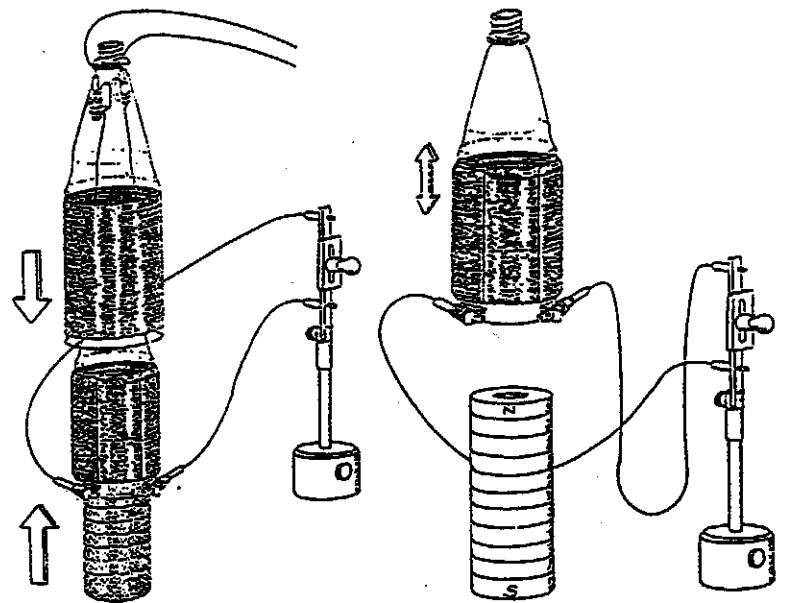
Arago-Experiment mit Umkehrung



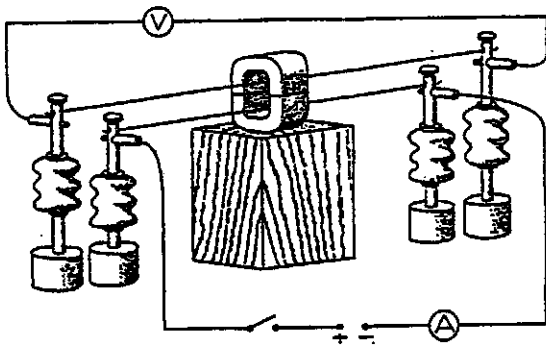
Faradays Ringkern-Anordnung und Galvanometer



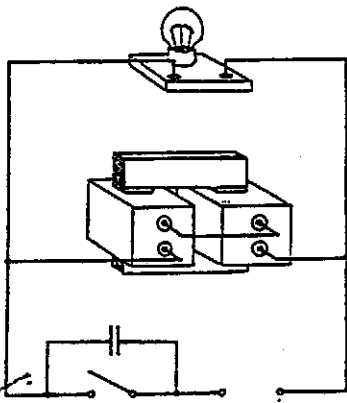
Induktionsanordnung mit gestrecktem Kern



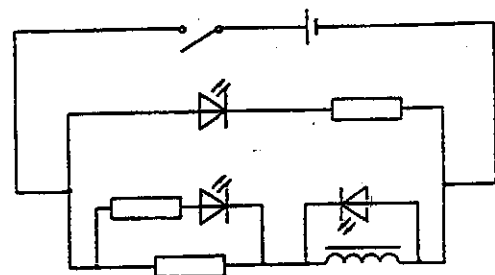
Induktion in einem gestreckten Leiter



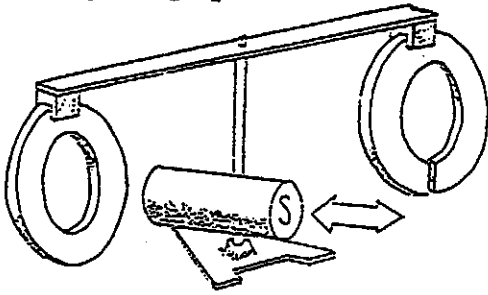
Selbstinduktion beim Ausschalten des Spulenstromes



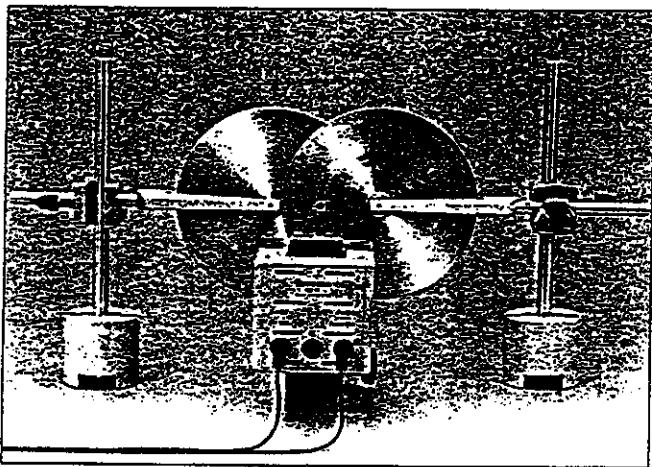
Selbstinduktion beim Ein- und Ausschalten des Spulenstromes



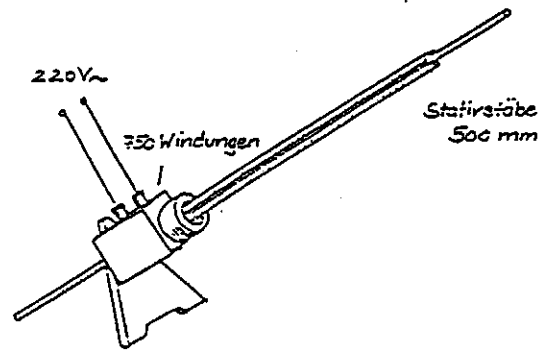
Faradays Ringexperiment



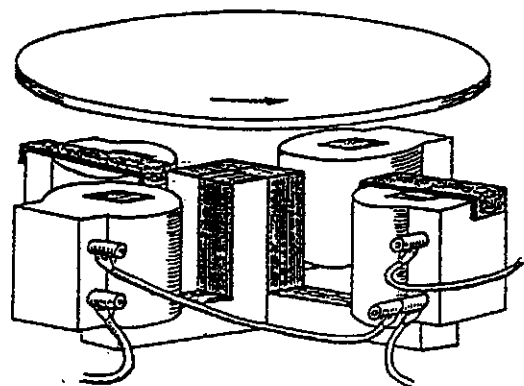
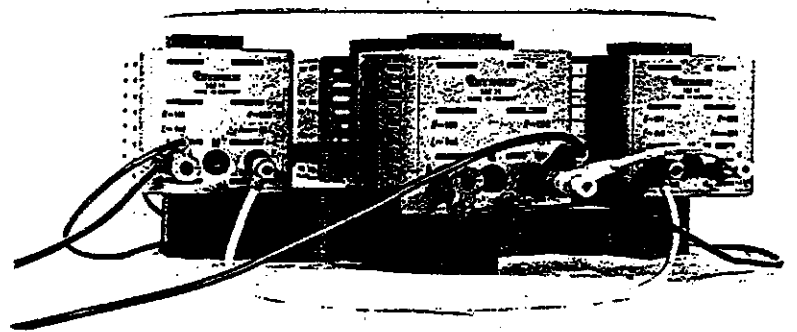
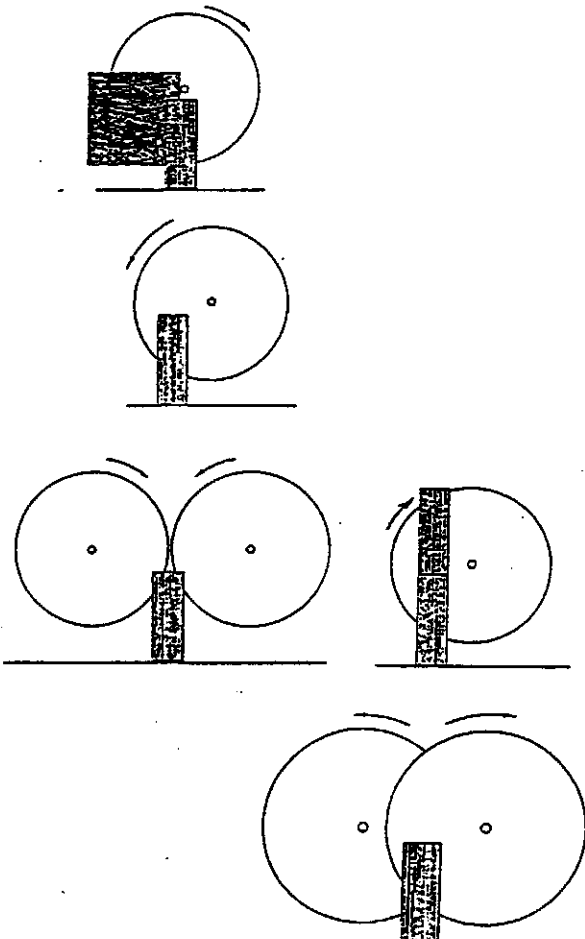
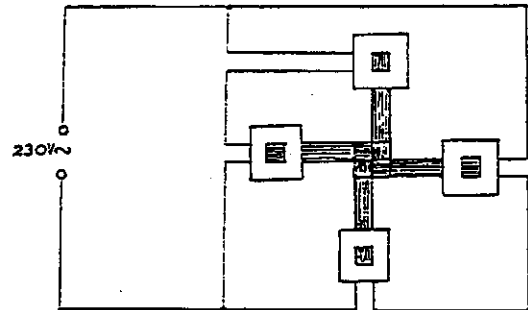
rotierende Aluminiumscheibe im magnetischen Wechselfeld



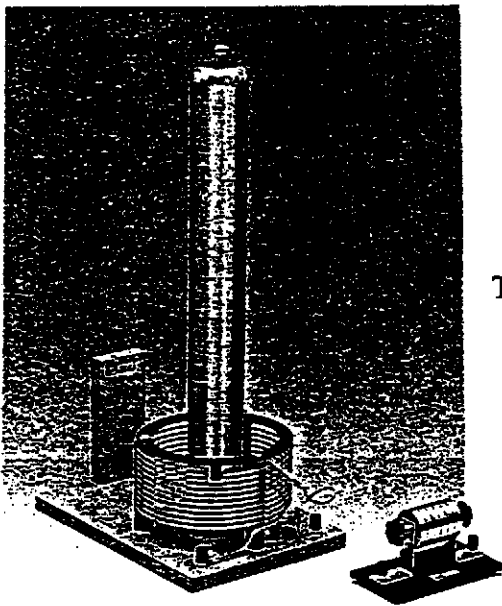
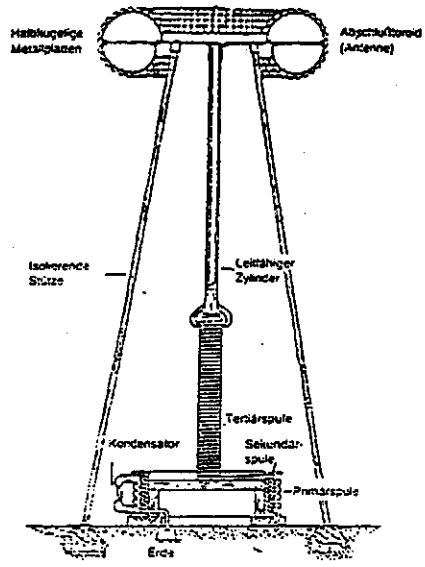
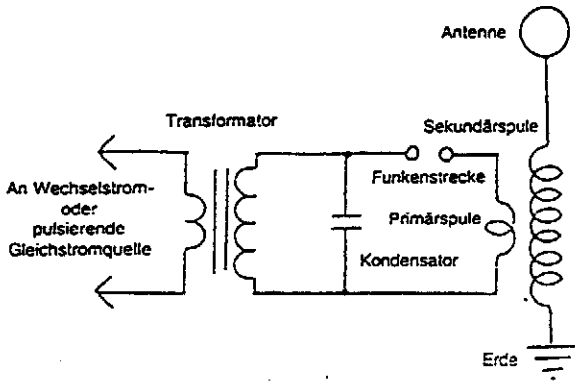
Thomsonsches Ringexperiment



schwebende Aluminiumscheibe im magnetischen Wechselfeld

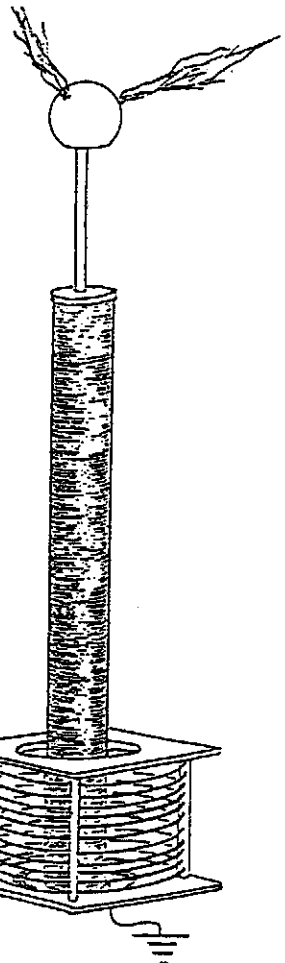


Schaltung eines Tesla-Transformators

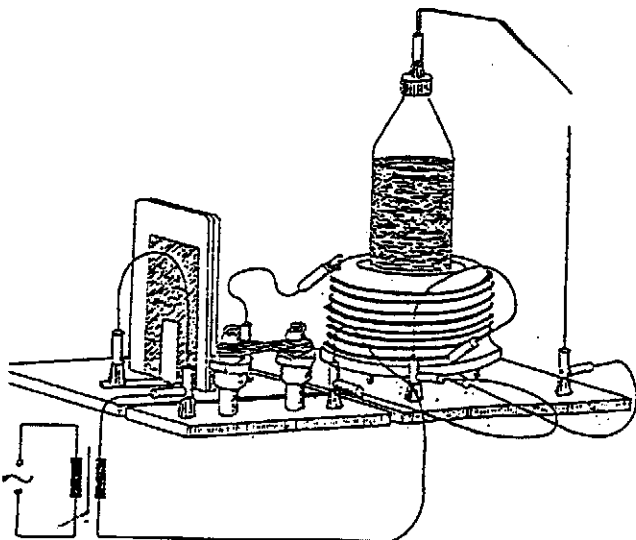


Tesla-Transformator

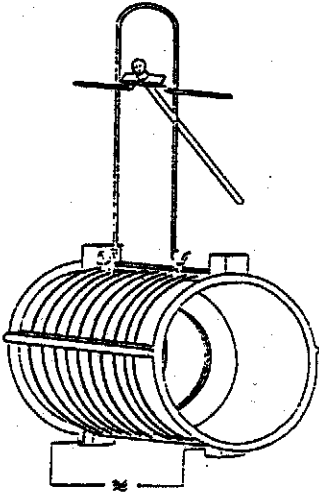
großer Selbstbau-Tesla-Transformator



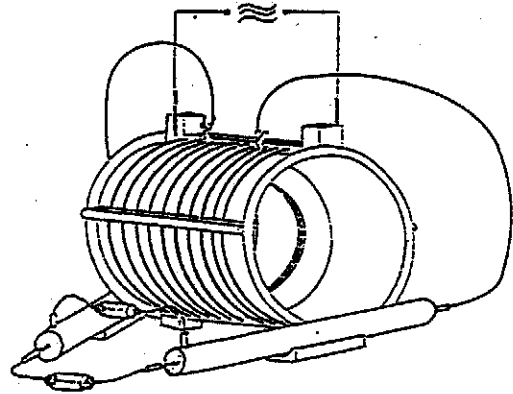
Selbstbau-Tesla-Transformator



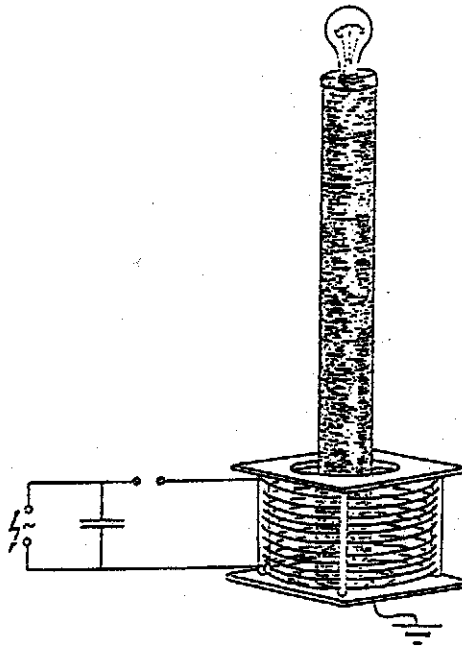
Wechselstromwiderstand einer Leiterschleife



Skin-Effekt



Tesla-Licht



Senden und Empfangen Hertzscher Wellen

